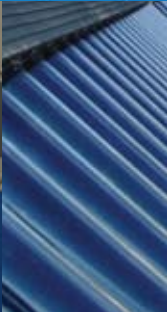




Cavandish Apartments

41 UNIT APARTMENT BUILDING



Global Point Energy is pleased to release the engineering data developed for the Cavandish Apartment Building in Peterborough, Ontario. After careful consideration of initial installation cost and efficient solar practices we have engineered a system to provide a three year payback and potential annual savings in excess of \$6 500 per year.

Our design pressure of 100 psi and operating average temperature of 120°F ensure above average production from the solar system compared to most solar hot water applications. The system is operating well and we have received excellent response from the community

Thanks to the Building Owner, the system will offset 40 cars emissions and plant the equivalent of 48 acres of trees over the 20 year life expectancy.

PRODUCT:	24 x GPE01-45 Collectors
PRODUCTION:	64823 KWh Annual Average
OFFSET:	Electric Tanks
PROJECTED COMPLETION DATE:	June 2009

The solar system will contribute **50%-70% of the total energy required** to heat the domestic hot water for approximately 80 people.

Completed, the system houses 720 evacuated tubes shading the rooftop with 1266 sq ft of collector area.

Total Number of Cars Off The Road: **2 per year**

Total Number of Trees Planted: **2.4 acres per year**

For more information, call **705.775.4436** or **877.741.4436** (toll-free) today!

WWW.GLOBALPOINTENERGY.CA
RENEWABLE ENERGY SOLUTIONS

GLOBAL POINT ENERGY

550 Braidwood Avenue
Peterborough, Ontario K9J 1W1

P 705.775.4436
TF 877.741.4436
F 705.741.2399

29 BARNARDO AVE.

8 UNIT APARTMENT BUILDING



GLOBAL POINT
ENERGY



Global Point Energy is pleased to release the engineering data developed for the Apartment Building in Peterborough at 29 Barnardo Ave. After careful consideration of initial installation cost and efficient solar practices we have engineered a system to provide a 3.49 year payback and potential annual savings in excess of \$2 700 per year.

Our design pressure of 100 psi and operating average temperature of 120°F ensure above average production from the solar system compared to most solar hot water applications. The system is operating well and we have received excellent response from the community.

Thanks to the Building Owner, the system will offset 15 cars emissions and plant the equivalent of 18 acres of trees over the 20 year life expectancy.

PRODUCT:	9 x GPE01-45 Collectors
PRODUCTION:	22607 KWh Annual Average
OFFSET:	Electric Tanks
PROJECTED COMPLETION DATE:	November 2009

The solar system will contribute **50%-70% of the total energy required** to heat the domestic hot water for approximately 16 people.

Completed, the system will houses 270 evacuated tubes shading the rooftop with 475 sq ft of collector area.

Total Number of Cars Off The Road: **1 per year**

Total Number of Trees Planted: **1 acre per year**

For more information, call **705.775.4436** or **877.741.4436** (toll-free) today!

WWW.GLOBALPOINTENERGY.CA
RENEWABLE ENERGY SOLUTIONS

GLOBAL POINT ENERGY

550 Braidwood Avenue
Peterborough, Ontario K9J 1W1

P 705.775.4436
TF 877.741.4436
F 705.741.2399